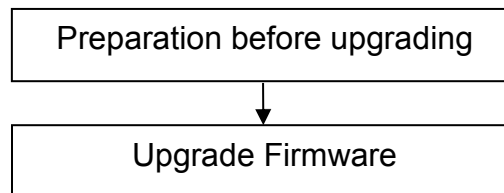


## Upgrade Guidance for FosBaby, FosBaby P1

This firmware is for FosBaby, FosBaby P1, please check your camera model on the sticker. Updating with the wrong firmware could severely damage and/or brick your camera. Please make sure the firmware is correct.

**Note:**

System firmware 1.5.1.11 or 1.5.2.12, App firmware 2.2x.1.153, 2.2x.1.155, 2.2x.1.215, 2.2x.1.218, 2.2x.1.220 or 2.x.2.5 **can** upgrade to this version.



**Preparation before upgrading:**

1. Please restart your camera before the upgrading;
2. DO NOT upgrade firmware over internet, just finish it in LAN;
3. Keep power on during the upgrading;
4. Unplug the SD card before upgrading;
5. Logging your camera as administrator first, upgrade firmware on web page.

**Upgrade the Firmware:**

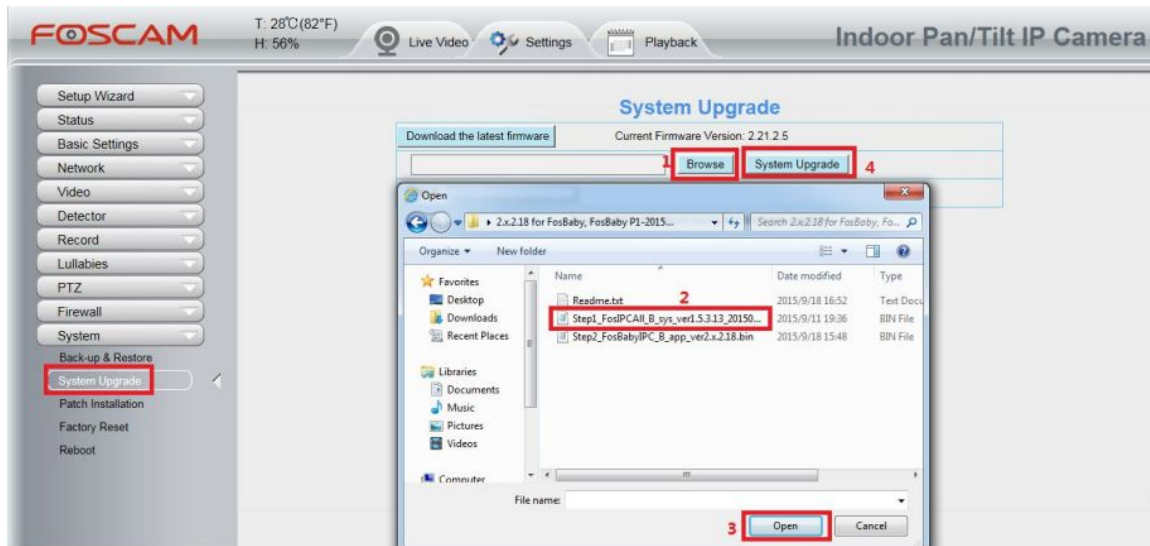
*(Let's take FosBaby P1 for example to finish the upgrading)*

**Step1:** Login your camera, go to **Settings → System → System Upgrade**.

Click **Browse/Choose File**,

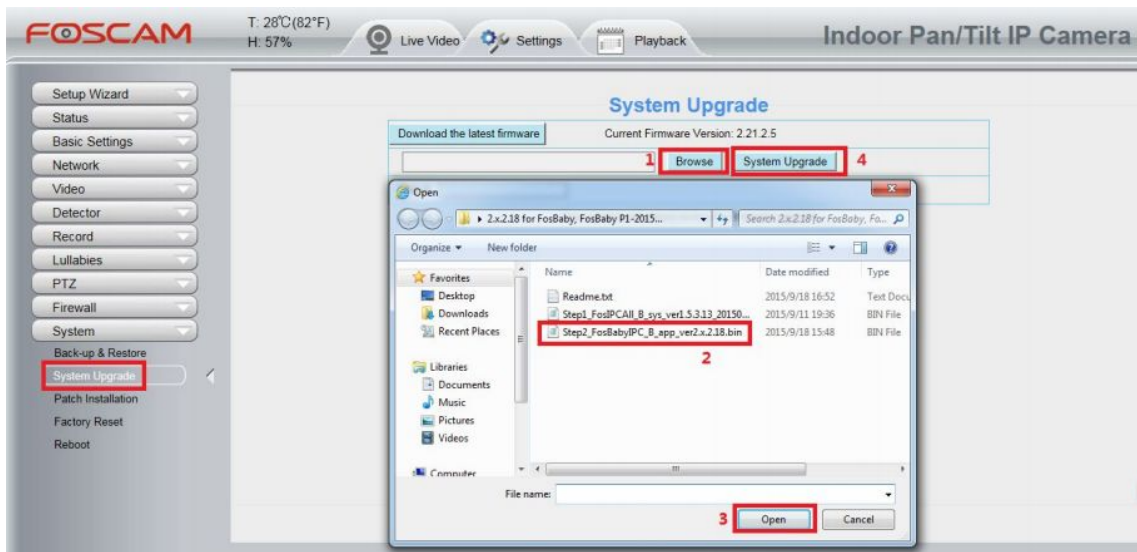
find the file **Step1\_FosIPCAI\_B\_sys\_ver1.5.3.13\_20150819** you've extracted in your local hard driver, then click **Open**. Camera will upgrade after you clicking **System Upgrade**.

**Note:** When "Upgrading, do not power off ... Xs" pop up, camera IP will disappear from the IP Camera Tool. Then camera will reboot itself, DO NOT power off the camera, please wait till the camera IP reappear in the IP Camera Tool.



**Step 2:** Login your camera again, please go to **Settings → System → System Upgrade**. Click **Browse/Choose File**, find the file **Step2\_FosBabyIPC\_B\_app\_ver2.x.2.18** you've extracted in your local hard driver, then click **Open**. Camera will upgrade after you clicking **System Upgrade**.


**Note:** When “Upgrading, do not power off ... Xs” pop up, camera IP will disappear from the IP Camera Tool. Then camera will reboot itself, DO NOT power off the camera, please wait till the camera IP reappear in the IP Camera Tool.



**Step 3:** Login again to check if the **System Firmware Version, Application Firmware Version and Plug-In Version** upgrade correctly.

**Note:**

You'd better re-install the plug-in if it did not upgraded;

| Device Information  |                     |
|---|---------------------|
|  Refresh |                     |
| Camera Model  | FosBaby P1          |
| Camera Name   | FosBabyP1           |
| Camera ID   | E8ABFA40B893        |
| Camera Time   | 2015/09/18 09:44:35 |
| System Firmware Version   | 1.5.3.15            |
| Application Firmware Version  | 2.21.2.18           |
| Plug-In Version   | 3.3.0.7             |

**Congratulations**, your camera successfully upgraded to the latest firmware!

**End**

--- by Foscam Technical Support Team